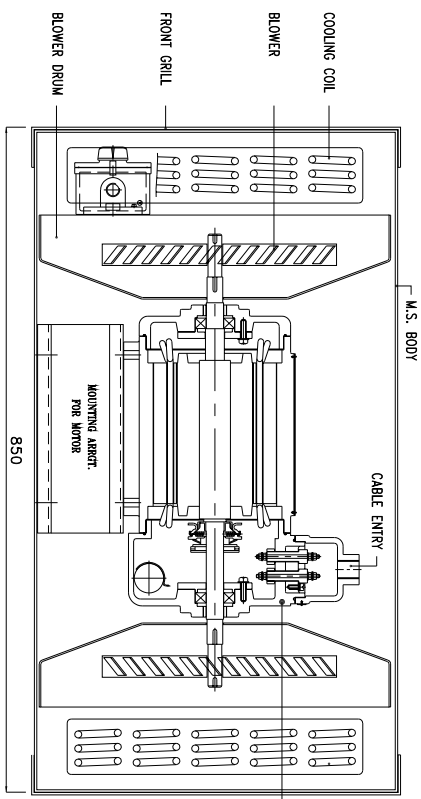


COOLING / CONDENSING UNIT  
(FRONT VIEW OF WINDOW A/C)

CIMFR TESTED FLP-WP TERMINAL/  
COMPRESSOR UNIT ENCLOSURE (Ex-d)  
SUITABLE FOR USE IN GAS GROUPS- IIA & IIB  
CAT. No. : SAC/211  
CIMFR. CERT. No. : IN/CIMFR/TR22/R/H15  
Dt.: 07/04/2022  
PESO CERT. No. : .  
BIS LICENCE No. : CM/L-0003931365

CIMFR TESTED FLP-WP ENCLOSURE FOR THERMOSTAT (Ex-d)  
SUITABLE FOR USE IN ZONE-1, GAS GROUPS - IIA & IIB  
CAT. No. : JB/2C/2017  
CIMFR. CERT. No. : IN/CIMFR/TR22/R/H136  
Dt. 08/07/2022  
PESO No. : .  
BIS LICENCE No. : CM/L-0003931365



SIDE VIEW

CIMFR TESTED FLP-WP MOTOR ENCLOSURE  
(Ex-d) SUITABLE FOR USE IN GAS GROUPS-  
I, IIA & IIB  
CAT. No. : FAN/140  
CIMFR. CERT. No. : IN/CIMFR/TR22/R/H561  
Dt. 31/03/2022  
PESO CERT. No. : P940766/1  
Dt.: 18/07/2022  
BIS LICENCE No. : CM/L-0003931365

AIR CONDITIONING UNIT SUITABLE FOR :

- 1 - FLAMEPROOF - ZONE-1 & 2, GAS GROUPS - IIA & IIB
- 2 - MATERIAL OF CONSTRUCTION - M.S. FABRICATED CASE
- 3 - FINISH - INSIDE & OUTSIDE LIGHT GREY EPOXY SPRAY  
PAINT SHADE No. 631
- 4 - EARTHING - 2 Nos. OUTSIDE SCREW WITH PLAIN WASHER
- 5 - HARDWARE - STAINLESS STEEL

**Fp-Wp Enclosure for Motor : (CAT. No. : FAN/140)**

- 1 - FLAMEPROOF (Ex d) PROTECTION - IIA/IIB & IIC, IS/IEC 60079-1 (2014)
- 2 - INGRESS (IP) PROTECTION - IP-66, IS/IEC 60529 (2001). (Reaffirmed 2014)
- 3 - MATERIAL - CAST IRON (C.I.) / M.S.
- 4 - FINISH - INSIDE & OUTSIDE LIGHT GREY EPOXY SPRAY PAINTING  
SHADE No. 631 AS PER IS:5
- 5 - EARTHING - 1 No. INTERNAL & 2 Nos. EXTERNAL SCREW OF M6  
SIZE WITH 2 Nos. PLAIN WASHERS
- 6 - HARDWARE - STAINLESS STEEL
- 7 - CABLE ENTRY - 1 No. M20 SIZE ENTRY WITH 1 No. M20 SIZE (FLP-WP) BRASS  
NICKEL PLATED DOUBLE COMPRESSION TYPE CABLE GLAND OF 'SUDHIR' MAKE
- 8 - TERMINALS - 2 Nos. 3/16" STUD TYPE TERMINALS OF 'SUDHIR' MAKE
- 9 - MOTOR RATING - 920 RPM, SINGLE PHASE, 0.25 HP

**Fp-Wp Enclosure for Thermostat : (CAT. No. : JB/2C/2017)**

- 1 - FLAMEPROOF (Ex d) PROTECTION - IIA/IIB & IIC, IS/IEC 60079-1 (2014)
- 2 - INGRESS (IP) PROTECTION - IP-66, IS/IEC 60529 (2001). (Reaffirmed 2014)
- 3 - MATERIAL - CAST ALUMINIUM ALLOY LM6
- 4 - FINISH - INSIDE & OUTSIDE LIGHT GREY EPOXY POWDER COATING SHADE  
No. 631 AS PER IS:5
- 5 - EARTHING - 1 No. INTERNAL & 2 Nos. EXTERNAL SCREW OF M4/M6 SIZE  
WITH 2 Nos. PLAIN WASHERS
- 6 - HARDWARE - STAINLESS STEEL
- 7 - CABLE ENTRY - 2 Nos. M20 SIZE ENTRIES WITH 1 No. M20 SIZE (FLP-WP) BRASS  
NICKEL PLATED DOUBLE COMPRESSION TYPE CABLE GLAND & 1 No. M20 SIZE  
M.S. (FLP) STOPPING PLUG OF 'SUDHIR' MAKE

**Fp-Wp Compressor & Terminal Unit : (Cat. No. : SAC/211)**

- 1 - FLAMEPROOF (Ex d) PROTECTION - IIA/IIB & IIC, IS/IEC 60079-1 (2014)
- 2 - INGRESS (IP) PROTECTION - IP-66, IS/IEC 60529 (2001). (Reaffirmed 2014)
- 3 - MATERIAL - CAST IRON (C.I.) / M.S.
- 4 - FINISH - OUTSIDE BLACK EPOXY SPRAY PAINTING SHADE No. AS PER IS:5
- 5 - EARTHING - BRASS/S.S. SCREW OF M4/M6 SIZE WITH PLAIN WASHERS
- 6 - CABLE ENTRY - 2 Nos. M20 SIZE WITH 1 No. M20 SIZE (FLP-WP) BRASS  
NICKEL PLATED DOUBLE COMPRESSION TYPE CABLE GLAND OF 'SUDHIR' MAKE
- 7 - COMPRESSOR - 220-240V AC, 50 Hz., SINGLE PHASE SUPPLY, SUITABLE  
FOR 2 TONNE CAPACITY FOR SPLIT TYPE AIR CONDITIONING UNIT
- 8 - GAS USE IN COMPRESSOR FOR REFRIGERANT IS '407' TYPE GAS

**NOTE :**  
COMPONENT LAYOUT IS TENTATIVE RELOCATION OF PARTS & COMPONENTS  
IS POSSIBLE AT THE TIME OF ACTUAL MANUFACTURING.  
OVERALL DIMENSIONS ARE ±10mm

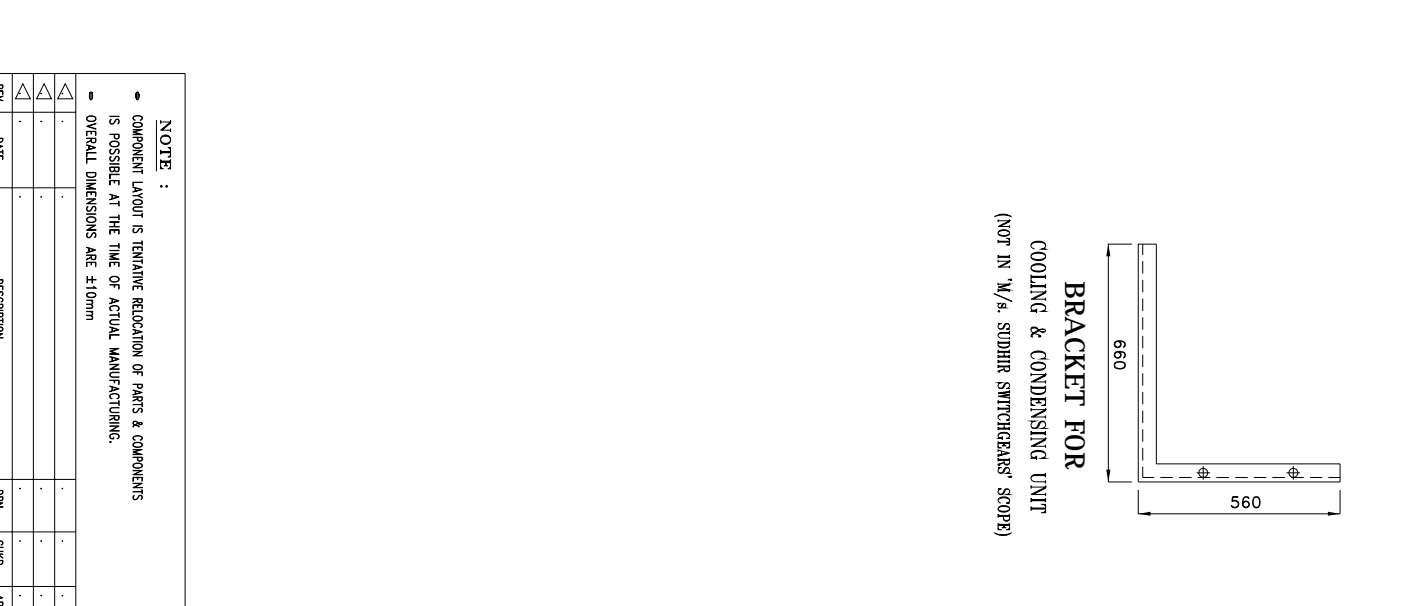
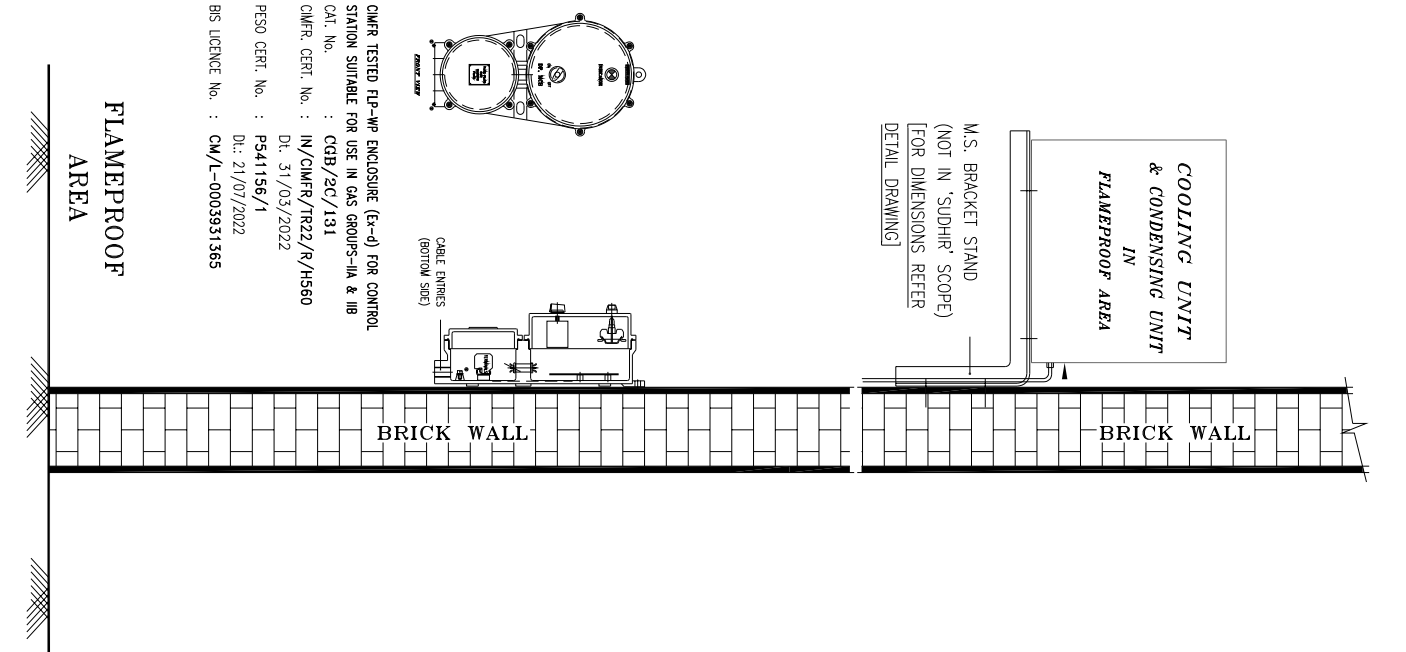
| REV. | DATE | DESCRIPTION | DRN. | CHD. | APPD. | SCALE |
|------|------|-------------|------|------|-------|-------|
| Δ    | .    | .           | .    | .    | .     | .     |
| Δ    | .    | .           | .    | .    | .     | .     |
| Δ    | .    | .           | .    | .    | .     | .     |

|           |            |
|-----------|------------|
| CAT. No.  | SAC/211    |
| MODEL No. | SAC/211-2  |
| DRN.      | prodiil    |
| CHKD.     | JASNAK     |
| APPD.     | .          |
| SHEET     | 1 OF 2     |
| REV.      | 0          |
| DATE      | 07/04/2022 |

|   |  |
|---|--|
| CAT. No.                                      | SUDHIR SWITCHGEARS PVT. LTD.             |
| 130, MULBARI SAMACHAR MARG, MULBARI - 400 023 |  |
| TITLE :                                       | SUDHIR BRAND WINDOW TYPE AIR CONDITIONER |
| CIMFR. CERT. No.                              | CNP/4416/2016-17                         |
| Dt.   | 22/06/2016                               |
| CIMFR/FES/Clnt/SPR/22-23/247                  |  |
| PESO No. :                                    |  |
| BIS LICENCE No. :                             | CM/L-0003931365                          |

THIS DRAWING IS PROPERTY OF "SUDHIR SWITCHGEARS PVT. LTD." AND MUST BE RETURNED ON REQUEST IT IS SUBMITTED AS CONFIDENTIAL INFORMATION IN CONNECTION WITH ENQUIRY, TENDER, ORDER, OR CONTRACTS IT IS NOT TO BE USED FOR ANY OTHER PURPOSE OR ORDER NOR MAY IT RE-COPIED OR LENT WITHOUT OUR AUTHORITY IN WRITING.

THIS DRAWING IS PROPERTY OF "SUDHIR SWITCHGEARS PVT. LTD." AND MUST BE RETURNED ON REQUEST IF IT IS SUBMITTED AS CONFIDENTIAL INFORMATION IN CONNECTION WITH ENQUIRY, TENDER, ORDER, OR CONTRACTS IT IS NOT TO BE USED FOR ANY OTHER PURPOSE OR ORDER NOR MAY IT RE-COPIED OR LENT WITHOUT OUR AUTHORITY IN WRITING.



**Flp-Wp Enclosure for Control Panel : CAT. No. : CGB/2C/131**

- 1 - FLAMEPROOF - ZONE-1 & 2, GAS GROUP - IIA & IIB AS PER IS/IEC 60079-1(2014),
- 2 - WEATHERPROOF - IP-56 DEGREE OF PROTECTION AS PER IS/IEC 60529 (2001)
- 3 - MATERIAL - CAST ALUMINIUM ALLOY LM6
- 4 - FINISH - INSIDE & OUTSIDE LIGHT GREY EPOXY POWDER COATING SHADE No. 631 AS PER IS:5
- 5 - EARTHING - 1 No. INTERNAL & 2 Nos. EXTERNAL SCREW OF M6 SIZE WITH 2 Nos. PLAIN WASHERS
- 6 - HARDWARE - STAINLESS STEEL/M.S. GALVANISED HIGH TENSILE
- 6 - GASKET - 'O' RING ENDLESS NEOPRENE RUBBER GASKET
- 7 - CABLE ENTRY - 5 Nos. M20 SIZE CABLE ENTRIES FROM BOTTOM SIDE WITH 3 Nos. M20 SIZE (FLP-WP) BRASS NICKEL PLATED DOUBLE COMPRESSION TYPE CABLE GLAND & 2 Nos. M20 SIZE M.S. (FLP) STOPPING PLUG OF 'SUDHIR' MAKE
- 8 - MOUNTING ARRGT. - WALL / COLUMN

**Internal Electrical Components as follows :**

- 1 - MCB - 1 No. 32 Amp. DP MCB OF 'INDO ASIAN/SCHNEIDER' MAKE
- 2 - INDICATING LAMP - 1 No. 240V AC LED TYPE OF 'TEKNIC/VAISHNO' MAKE (LENCE COLOUR 'RED')
- 3 - CAPACITOR - 1 No. 45mFD CAPACITOR OF 'SARDA' MAKE
- 4 - TERMINALS - 12 Nos. 6sq. mm CLIP-ON TYPE OF 'ELMEX' MAKE

**VOLTAGE RATING**

|         | STARTING CURRENT                           | RUNNING CURRENT                                   |
|---------|--|---|
| 5 TONNE | 22 Amp. Single Ph. 50/60 Hz., 230 Volts AC | 10-12 Amp. (-) Single Ph. 50/60 Hz., 230 Volts AC |

**NOTE :**

- COMPONENT LAYOUT IS TENTATIVE RELOCATION OF PARTS & COMPONENTS IS POSSIBLE AT THE TIME OF ACTUAL MANUFACTURING.
- OVERALL DIMENSIONS ARE ±10mm

**FLAMEPROOF AREA**

**BRICK WALL**

**COOLING UNIT & CONDENSING UNIT IN FLAMEPROOF AREA**

**M.S. BRACKET STAND (NOT IN 'SUDHIR' SCOPE) [FOR DIMENSIONS REFER DETAIL DRAWING]**

**BRACKET FOR COOLING & CONDENSING UNIT (NOT IN 'M/S. SUDHIR SWITCHGEARS' SCOPE)**

**BRICK WALL**

**CABLE ENTRIES (BOTTOM SIDE)**

**CMFR TESTED FLP-WP ENCLOSURE (Ex-d) FOR CONTROL STATION SUITABLE FOR USE IN GAS GROUPS- IIA & IIB**

CAT. No. : CGB/2C/131  
 CMFR CERT. No. : IN/CMFR/TR22/R/H560  
 D.C. : 31/03/2022  
 PESO CERT. No. : PS41156/1  
 D.C. : 21/07/2022  
 BIS LICENCE No. : CM/L-0003931365

**REV. DATE DESCRIPTION DRN. CHD. APPD. SCALE**

**CAT. No. SAC/211**  
**MODEL No. SAC/211-2**  
**DRN. profill**  
**CHD. JASHAW**  
**APPD. .**  
**SHEET 2 OF 2**  
**N. T. S. REV.- 0**

**TITLE :**  
**SUDHIR BRAND WINDOW TYPE AIR CONDITIONER**

**CMFR CERT. No. CNP/4416/2016-17**  
**DR. 22/06/2016**  
**CMFR/FES/Clert/SSPL/22-23/147**

**PESO No. :**  
**BIS LICENCE No. : CM/L-0003931365**

**SUDHIR SWITCHGEARS PVT. LTD.**  
 130, MULBER SAMAGHAR MARG, MULBER - 400 023